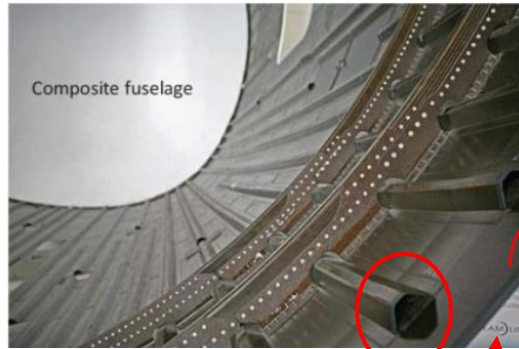
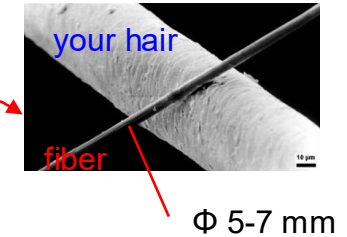
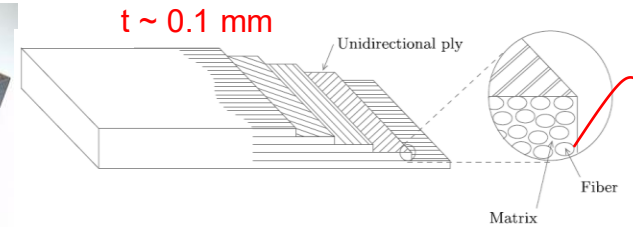


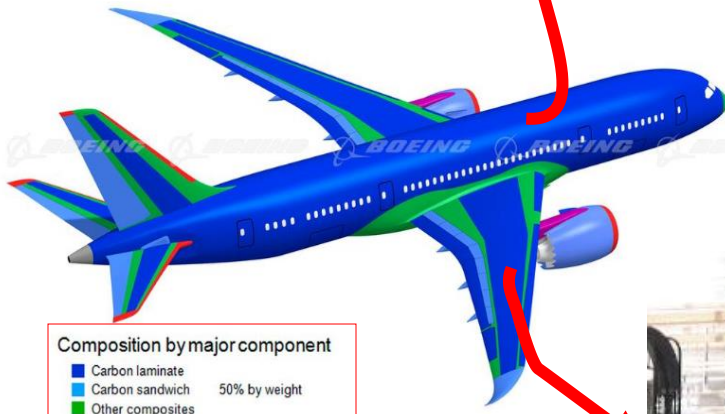
Composite Materials



Continuous fiber reinforced polymer laminate



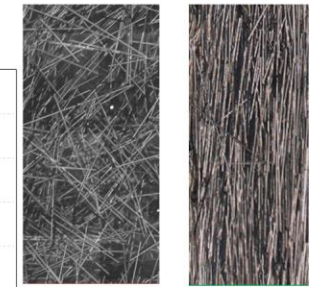
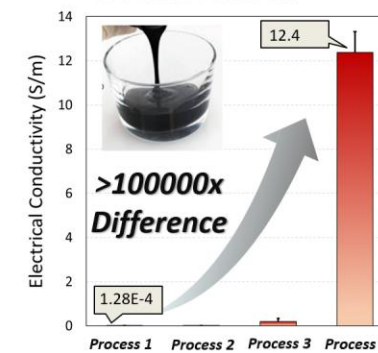
Reinforcement details



Research on

- Continuous fiber laminates
- Conductive composites
- High fidelity FEM

Electrical Conductivity of 3D Printed C-Fiber Ink



- Same Ink/Material !!!
- Only change printing parameters
- 100000x change in conductivity
- Conductor to Insulator Transition

Enabling

- In-house code for rapid virtual design and test composite aircrafts
- Creation of optimized structures with embedded damage detection layer for 24-7 monitoring
- Powerful surface layer for de-icing, anti-lightning strike etc.,
- Coupled with AI/ML for rapid search of optimal designs

Permalink: [http://www.boeingimages.com/archive/Boeing 787 Dreamliner Composition by Major Component-2JRSXLJW4ZHP.html](http://www.boeingimages.com/archive/Boeing%20787%20Dreamliner%20Composition%20by%20Major%20Component-2JRSXLJW4ZHP.html)
Copyright © Boeing. All Rights Reserved.

View Photo/Video Only

